

GAUT • WHITTENBURG • EMERSON

Commercial Real Estate

806-373-3111

www.gwamarillo.com



FOR SALE

1001 NW 1st, Amarillo, TX

INDUSTRIAL PROPERTY



BUILDING SIZE: 140,208 sf per 2007 appraisal
LOT SIZE: 5.03 acres
ZONING: I-1 Light Industrial
ASKING PRICE: \$2,950,000.00

- 5.03 Acres, fenced w/ large storage yard
- Great for manufacturing or general warehousing
- Dock and grade level doors throughout
- +/- 20,056 sf of very nice office space
- Ceiling heights in warehouse range from 11' to 21'
- Fire suppression system in place
- Former Tech Spray / ITW



This information has been secured from sources we believe to be reliable, but we make no representation or warranties, expressed or implied, as to the accuracy of the information. References to measurements are approximate. Buyer must verify the information and bears all risks for inaccuracies.

This property is represented by:
BEN WHITTENBURG
ben@gwamarillo.com • 806-373-3111

GAUT • WHITTENBURG • EMERSON

Commercial Real Estate

806-373-3111

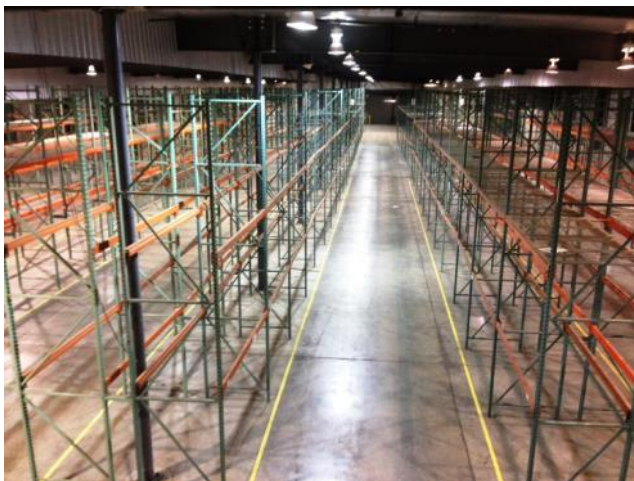
www.gwamarillo.com



FOR SALE

1001 NW 1st, Amarillo, TX

INDUSTRIAL PROPERTY



This information has been secured from sources we believe to be reliable, but we make no representation or warranties, expressed or implied, as to the accuracy of the information. References to measurements are approximate. Buyer must verify the information and bears all risks for inaccuracies.

This property is represented by:
BEN WHITTENBURG
ben@gwamarillo.com • 806-373-3111

GAUT · WHITTENBURG · EMERSON

Commercial Real Estate

806-373-3111

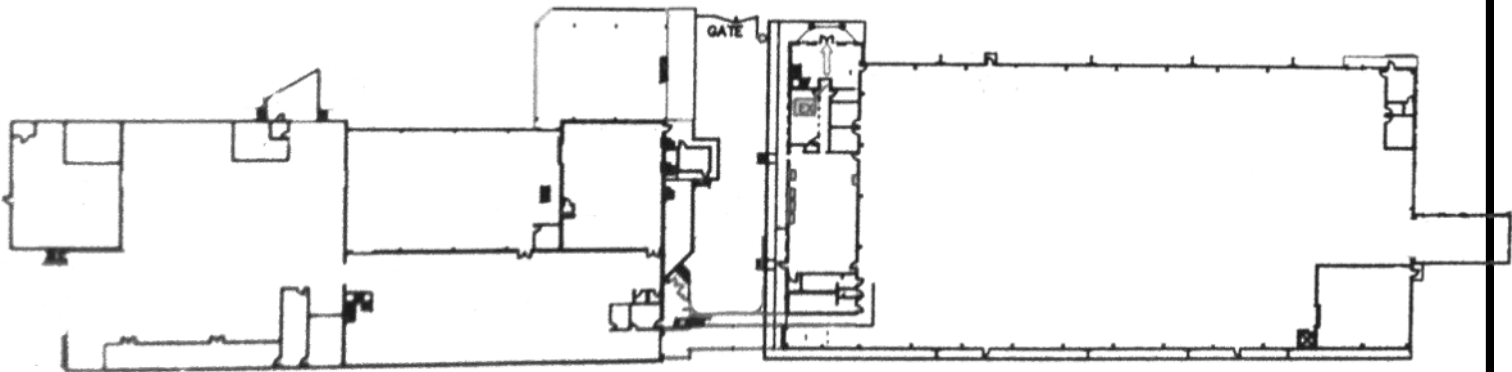
www.gwamarillo.com



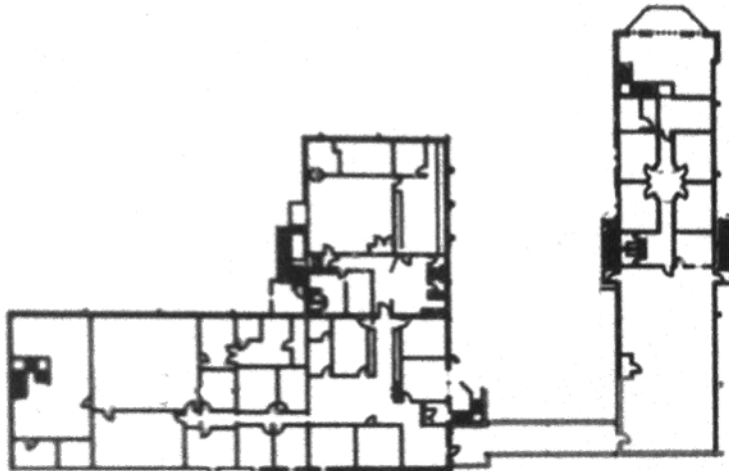
FOR SALE

1001 NW 1st, Amarillo, TX

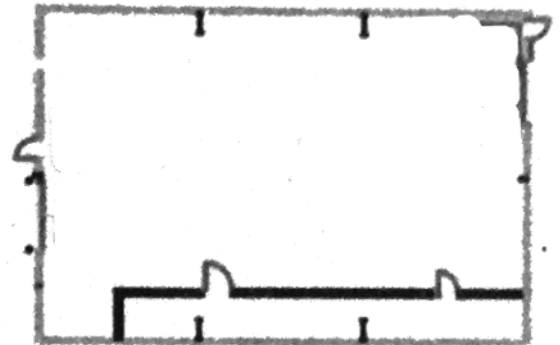
INDUSTRIAL PROPERTY



Warehouse
+/-116,402 sf



Office
+/- 20,056 sf



Outparcel warehouse
+/-3,750 sf

This information has been secured from sources we believe to be reliable, but we make no representation or warranties, expressed or implied, as to the accuracy of the information. References to measurements are approximate. Buyer must verify the information and bears all risks for inaccuracies.

This property is represented by:
BEN WHITTENBURG
ben@gwamarillo.com • 806-373-3111