

GAUT · WHITTENBURG · EMERSON

Commercial Real Estate

806-373-3111
GWAMARILLO.COM



FOR LEASE

1201 S Polk
Amarillo, TX

RETAIL OFFICE SPACE - VINEYARD MANOR



Corner of 12th & Polk

ZONING: PD - Planned Development

LEASE RATE: Various

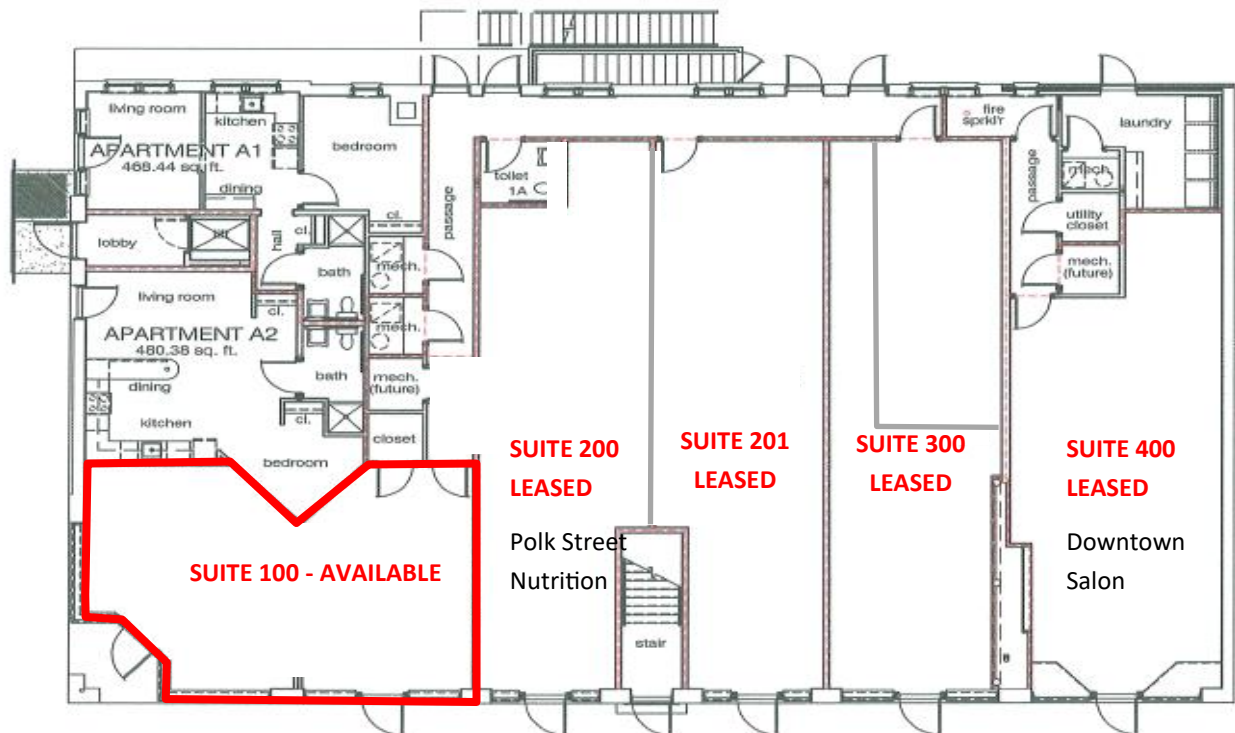
Built in 1926

Full Renovated in 2012

Suites Available

- Space 100: 766.74 sf - \$950 / month
- Space 200: 846 sf - **LEASED**
- Space 201: 845 sf - **LEASED**
- Space 300: 801 sf - **LEASED**
- Space 400: 776 sf - **LEASED**

16 apartment units above commercial spaces



This information has been secured from sources we believe to be reliable, but we make no representation or warranties, expressed or implied, as to the accuracy of the information. References to measurements are approximate. Buyer must verify the information and bears all risks for inaccuracies.

This property is represented by:
Gabe Irving, CCIM
gabe@gwamarillo.com • 806-373-3111

GAUT · WHITTENBURG · EMERSON

Commercial Real Estate



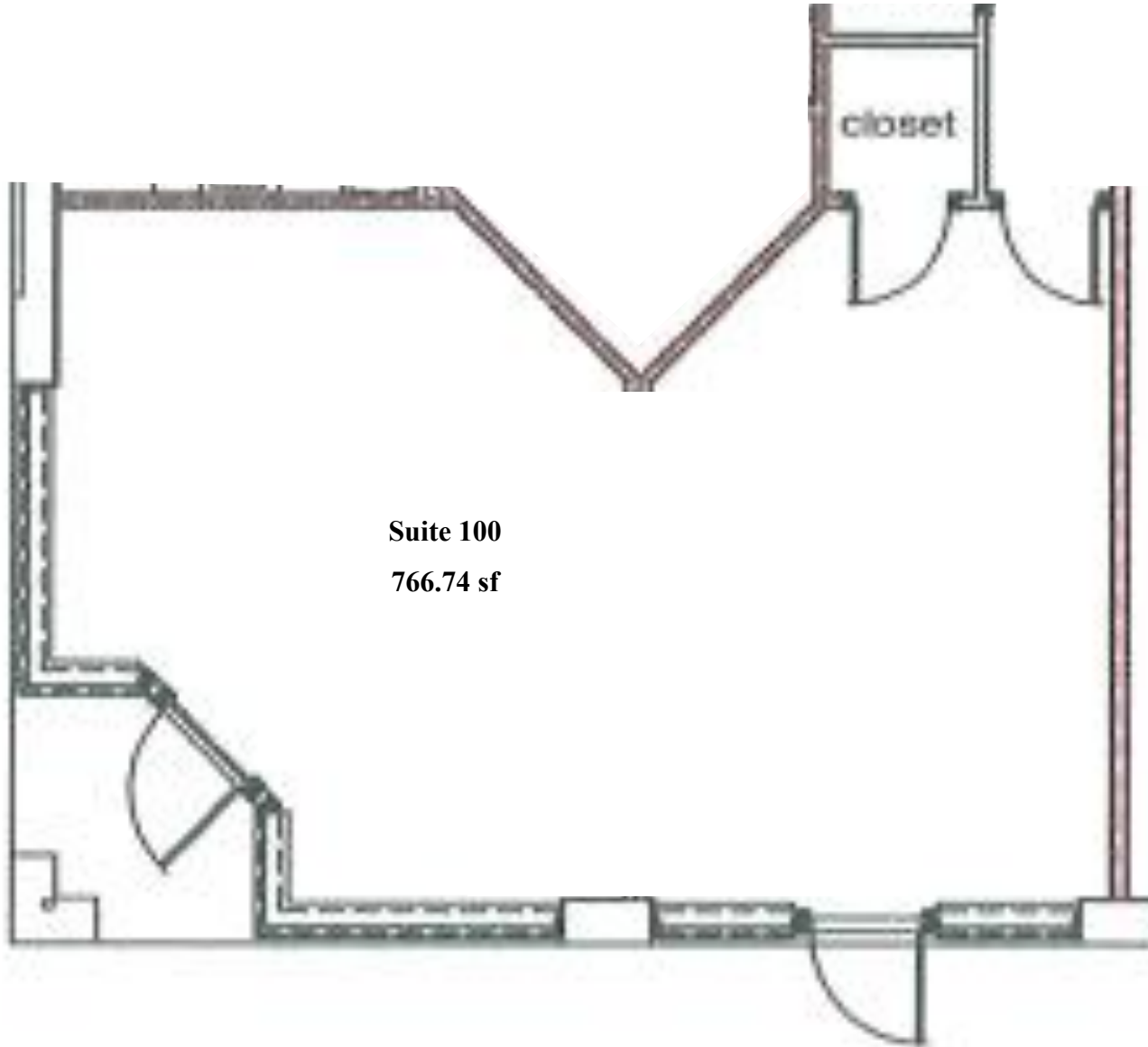
806-373-3111
GWAMARILLO.COM



FOR LEASE

1201 S Polk
Amarillo, TX

RETAIL OFFICE SPACE - VINEYARD MANOR



Suite 100
766.74 sf

This information has been secured from sources we believe to be reliable, but we make no representation or warranties, expressed or implied, as to the accuracy of the information. References to measurements are approximate. Buyer must verify the information and bears all risks for inaccuracies.

This property is represented by:
Gabe Irving, CCIM
gabe@gwamarillo.com • 806-373-3111