



FOR LEASE

1408 S. Jefferson, Amarillo, TX

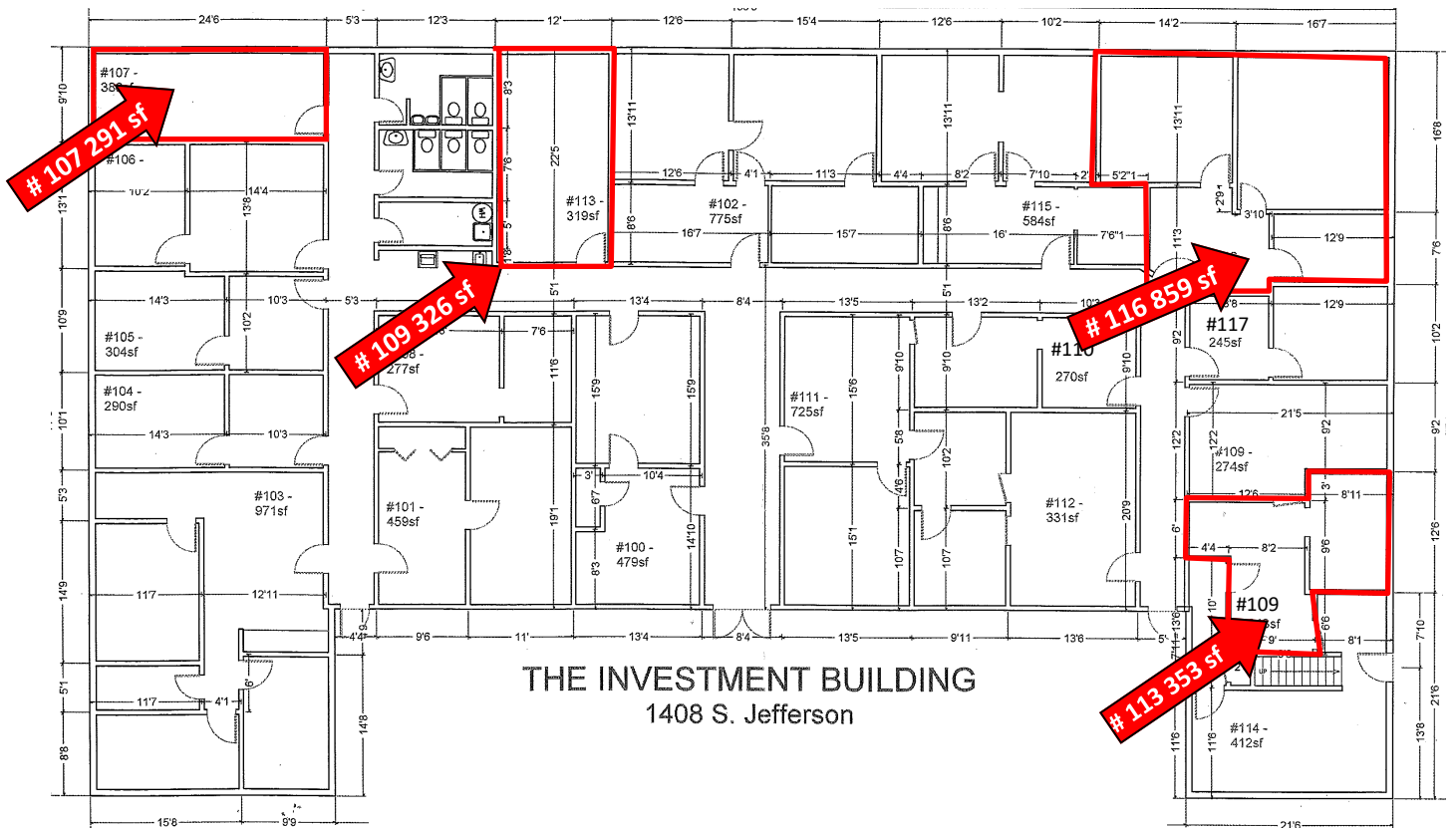
DOWNTOWN OFFICE SUITES IN THE INVESTMENT BUILDING



SPACE AVAILABLE: 291 sf - 584 sf
YEAR BUILT: 1964
ZONING: GR General Retail
LEASE RATE:

Suite 107 291 sf - \$245.00 / month
Suite 109 326 sf - \$245.00 / month
Suite 113 353sf - \$270.00 / month
Suite 116 859 sf - \$645.00 / month

- Single office/reception suite
- Ground floor
- All bills paid
- Convenient parking
- Move in ready
- Signage



This information has been secured from sources we believe to be reliable, but we make no representation or warranties, expressed or implied, as to the accuracy of the information. References to measurements are approximate. Buyer must verify the information and bears all risks for inaccuracies.

This property is represented by:
GABE IRVING, CCIM
 gabe@gwamarillo.com • 806-373-3111