

GAUT · WHITTENBURG · EMERSON

Commercial Real Estate

806-373-3111
GWAMARILLO.COM



FOR LEASE

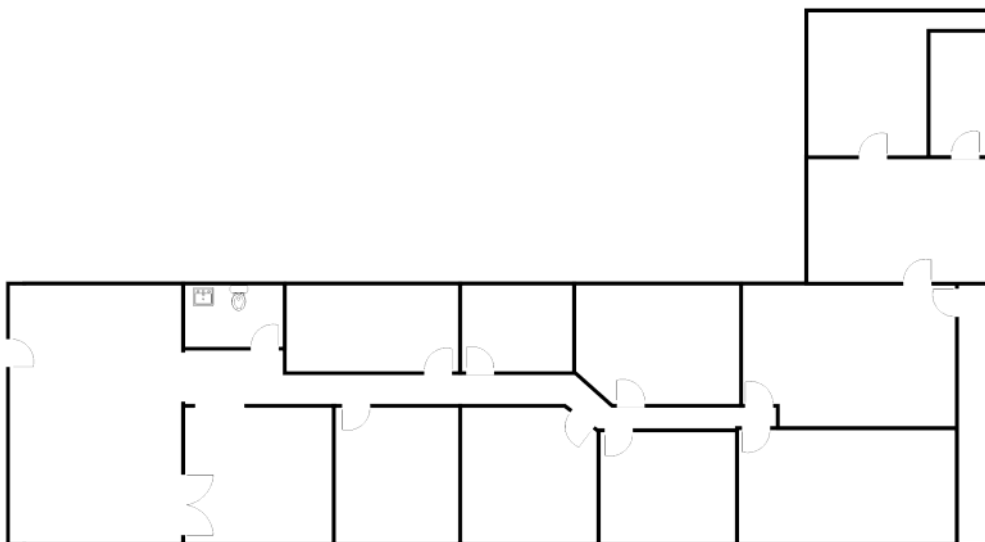
4104 SW 33rd #100,
Amarillo, TX

RETAIL/OFFICE



BUILDING SIZE: 2,400 sf
YEAR BUILT: 1965
ZONING: LC - Light Commercial
LEASE RATE: \$2,200/month + utilities

- Very nice former spa space
- Easy to find East of Western Street
- Abundant Parking
- Ideal for physical therapist, dentist, chiropractor, salon or general office.



This information has been secured from sources we believe to be reliable, but we make no representation or warranties, expressed or implied, as to the accuracy of the information. References to measurements are approximate. Buyer must verify the information and bears all risks for inaccuracies.

This property is represented by:
Arra Coleman
arra@gwamarillo.com • 806-373-3111