

# GAUT · WHITTENBURG · EMERSON

Commercial Real Estate



**806-373-3111**  
GWAMARILLO.COM



## FOR LEASE

**6009 Belpree,  
Amarillo TX**

### MEDICAL OFFICE



**BUILDING SIZE:** 1,695 sf

**YEAR BUILT:** 1994

**LOT SIZE:** 7,440 sf

**LEASE RATE:** \$1,800 / month + Utilities

- Reception Area
- Secretarial Office w/ window
- 1 large office
- 1 storage room
- Break room
- 3 exam rooms with sinks
- 1 lab room
- 1 private restroom
- 1 handicap restroom
- 1 block south of I-40. Behind strip center
- 2<sup>nd</sup> building from corner of Bell and Belpree
- 8 parking spaces

This information has been secured from sources we believe to be reliable, but we make no representation or warranties, expressed or implied, as to the accuracy of the information. References to measurements are approximate. Buyer must verify the information and bears all risks for inaccuracies.

This property is represented by:  
Cathy Derr, CCIM  
cathy@gwamarillo.com • 806-373-3111

# GAUT · WHITTENBURG · EMERSON

Commercial Real Estate



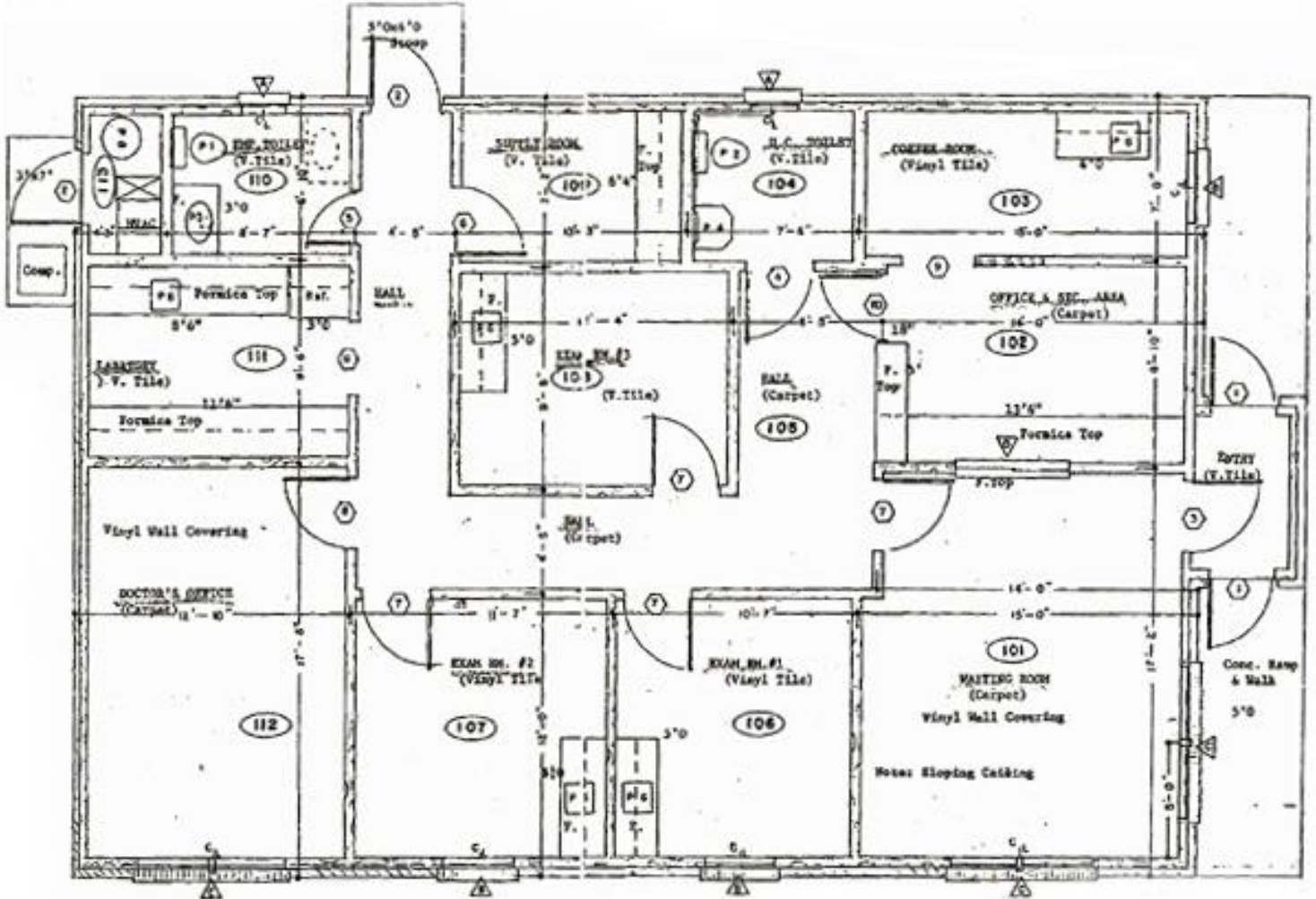
**806-373-3111**  
GWAMARILLO.COM



# FOR LEASE

**6009 Belpree,  
Amarillo TX**

## MEDICAL OFFICE



This information has been secured from sources we believe to be reliable, but we make no representation or warranties, expressed or implied, as to the accuracy of the information. References to measurements are approximate. Buyer must verify the information and bears all risks for inaccuracies.

This property is represented by:  
Cathy Derr, CCIM  
cathy@gwamarillo.com • 806-373-3111