

GAUT • WHITTENBURG • EMERSON

Commercial Real Estate

806-373-3111

www.gwamarillo.com



FOR LEASE

603 Quail Creek, Amarillo, TX

MEDICAL OFFICE



SPACE AVAILABLE: 498 sf
YEAR BUILT: 2011
PARKING: Reserved and customer parking.
ZONING: O - Office
LEASE RATE: \$750.00 / month + Janitorial

- Utilities included and private restrooms.
- No common area add-on
- 1 large space, could be divided for private offices.
- Finished space ready to occupy.
- Hardwood floors.
- Drive up parking for employees and patients.
- Signage and easy to find space for business identification.
- Close to medical, service, restaurants and banks.

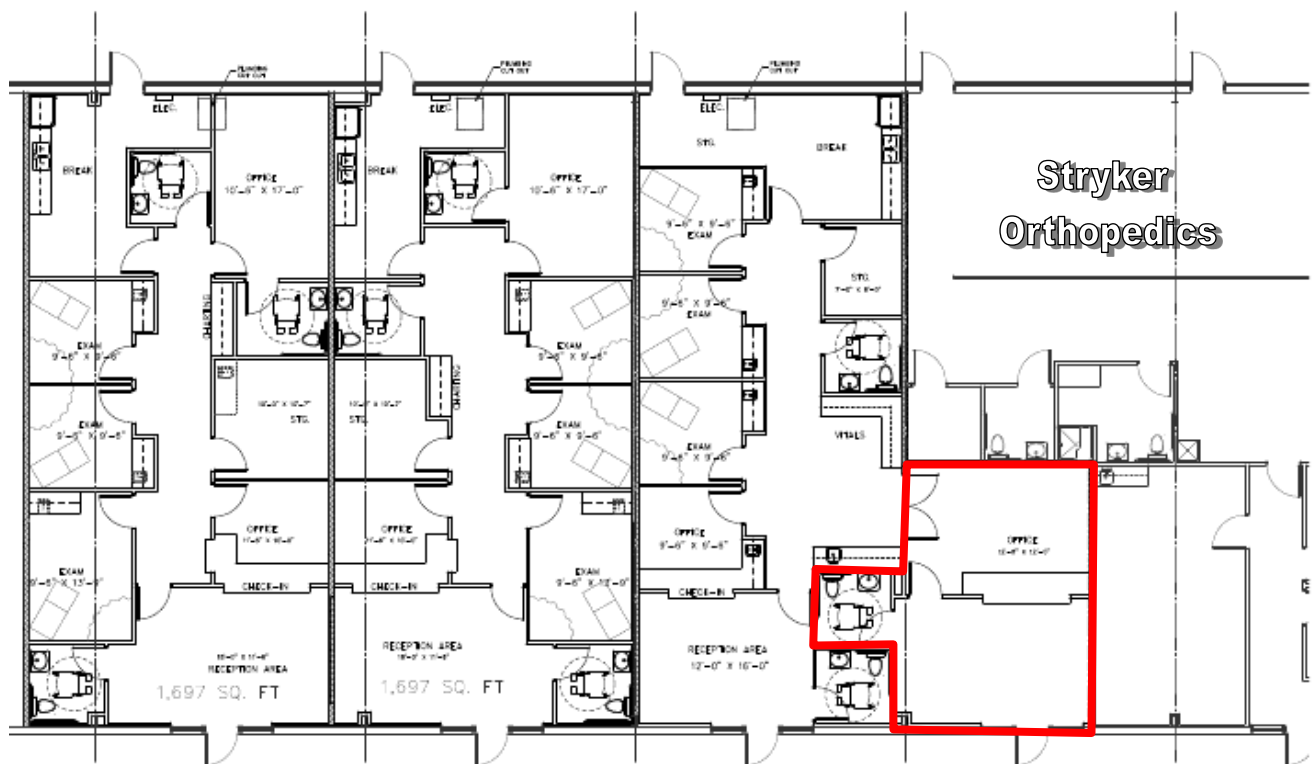
This information has been secured from sources we believe to be reliable, but we make no representation or warranties, expressed or implied, as to the accuracy of the information. References to measurements are approximate. Buyer must verify the information and bears all risks for inaccuracies.

This property is represented by:
GABE IRVING, CCIM
gabe@gwamarillo.com • 806-373-3111



MEDICAL OFFICE

Floor Plan



**Stryker
Orthopedics**



LEASED

Amarillo Diagnostic Center



LEASED

Amerita Specialty Infusion



AVAILABLE: Suite 700 - 498 SF

\$750.00/ month

This information has been secured from sources we believe to be reliable, but we make no representation or warranties, expressed or implied, as to the accuracy of the information. References to measurements are approximate. Buyer must verify the information and bears all risks for inaccuracies.

**This property is represented by:
GABE IRVING, CCIM
gabe@gwamarillo.com • 806-373-3111**