

GAUT · WHITTENBURG · EMERSON

Commercial Real Estate



806-373-3111
GWAMARILLO.COM



FOR LEASE

**750 & 764 N Grand,
AMARILLO, TX**

WAREHOUSE/OFFICE



BUILDING SIZE: 750 N Grand: 8,000 sf
764 N Grand: 4,000 sf

YEAR BUILT: 1948 & 1950

LOT SIZE: 1.5 acres (65,340 sf)

ZONING: I-2 - Heavy Industrial

TRAFFIC COUNT: 15,477 cars per day

LEASE RATE: \$2,000/month + utilities

- Approximately 1.5 acres of fenced yard
- Includes (3) small buildings for storage

750 N Grand - 4,000 sf

- Best used for storage - no restroom
- (2) 12' x 12' overhead doors

764 N Grand - 8,000 sf

- (2) offices approximately 1,000 sf
- Showroom
- Breakroom
- 7,000 sf warehouse approximately 3,500 sf enclosed and 3,500 open
- Overhead pulley system
- 12' sidewalls
- 19' center point
- (2) 10' x 10' overhead doors
- Roof replaced 2 years ago



This information has been secured from sources we believe to be reliable, but we make no representation or warranties, expressed or implied, as to the accuracy of the information. References to measurements are approximate. Buyer must verify the information and bears all risks for inaccuracies.

This property is represented by:
Miles Bonifield
miles@gwamarillo.com • 806-373-3111

GAUT · WHITTENBURG · EMERSON

Commercial Real Estate



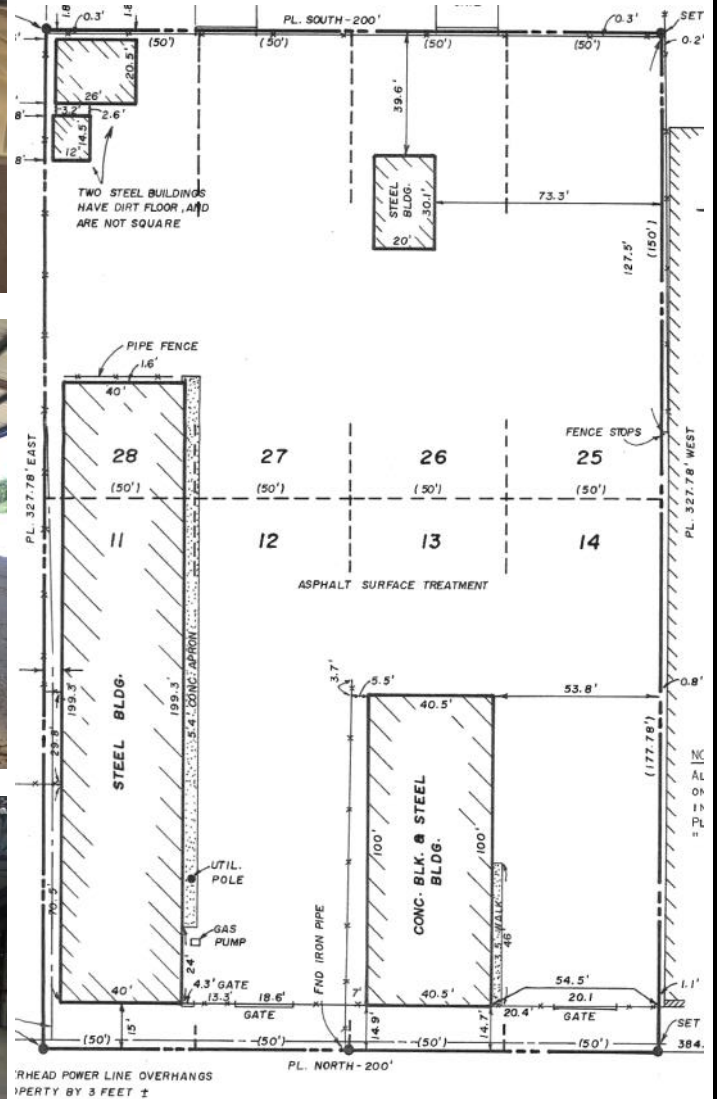
806-373-3111
GWAMARILLO.COM



FOR LEASE

**750 & 764 N Grand,
AMARILLO, TX**

WAREHOUSE/OFFICE



This information has been secured from sources we believe to be reliable, but we make no representation or warranties, expressed or implied, as to the accuracy of the information. References to measurements are approximate. Buyer must verify the information and bears all risks for inaccuracies.

This property is represented by:
Miles Bonifield
miles@gwamarillo.com • 806-373-3111